

REEL EZ TUBE INSTRUCTIONS

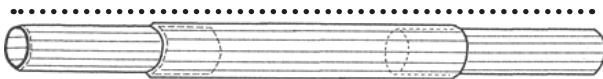
- For mounting on dock, measure the width of your boat from one outside edge to the other outside edge. Allow at least 4" per side to the total width.

Smaller Diameter Tube



Insert smaller diameter tubes, into large diameter tube making sure small diameter tubes on each side are inserted at 9" into the larger Diameter tube. Make a mark on the small diameter tubes at the sleeve of the large diameter tube, once inserted to the proper length make sure both sides are

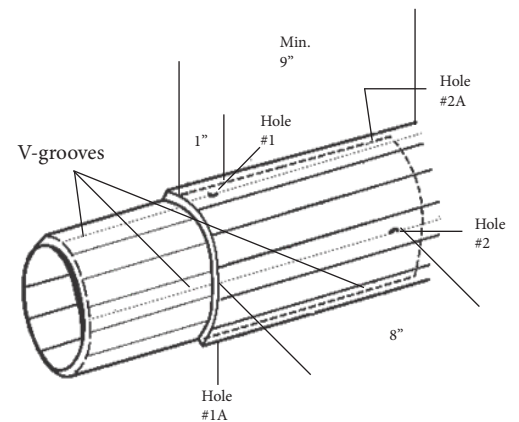
Boat Width: +8' or more or wide enough to span dock edges



- Note the 4 V-grooves running the length of each tube. They are designed to lessen drill bit movement while drilling holes in tubes. Start with one end of the tube first. Holding the tubes in place use a 1/4" drill bit to drill a hole (Hole #1) in the V-grooves.

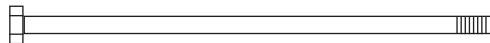
To prevent tubes from moving while drilling the next hole (Hole #2) loosely insert a carriage bolt (Item #27) into Hole #1. Rotate tube 90 degrees, and drill Hole #2 in V-grooves, as per drawing.

Remove carriage bolt (Item #27) from Hole #1 and insert it into Hole #2. Rotate tube 90 degrees and drill Hole #1A in V-grooves. Then remove carriage bolt (Item #27) from Hole #2 and insert it into Hole #1A. Rotate tube 90 degrees & drill Hole #2A in V-grooves, as per drawing.



Do same on other end of tube set.

-



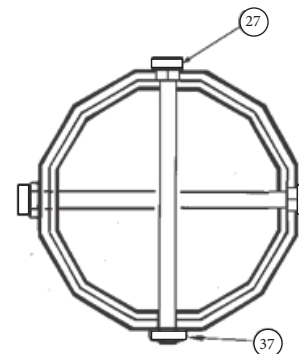
**VERY IMPORTANT:
YOU MUST USE BOLTS TO PREVENT SAGGING**

Drill 4 holes in tubing as per drawing on page.



- Insert bolt (Item #27). Lightly tap the bolt into place with a hammer. Install lock nut (Item #37) finger tight.

Tighten the lock nut (Item #37) with wrench, being careful not to over tighten and strip the threads



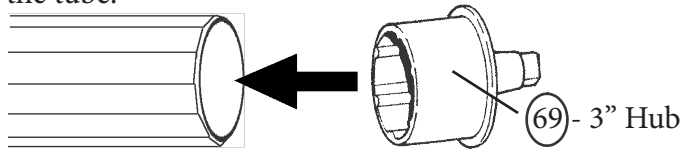
REEL EZ REEL INSTRUCTIONS

5 Assembling the System

Please see instructions supplied in the Tube box before going any further.

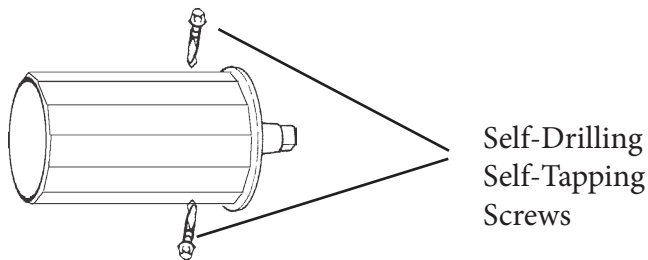
VERY IMPORTANT:

You must use the bolts supplied or the tube may sag. When you have assembled the tube according to the instructions put the 3" hubs (Item #69) in each end of the tube.

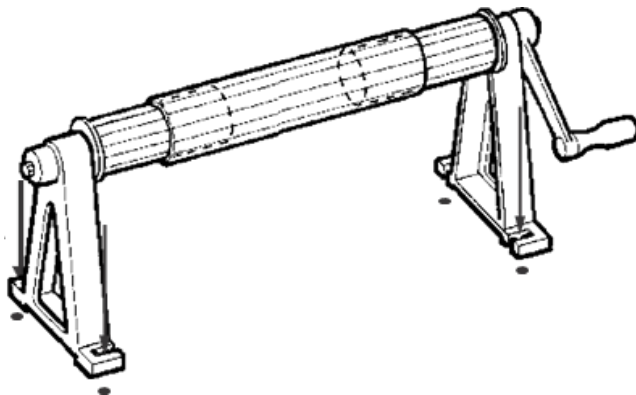


Using the Self-Drilling, Self-Tapping screws attach the 3" hubs in each end of the tube.

NOTE: No pre-drilling required



7



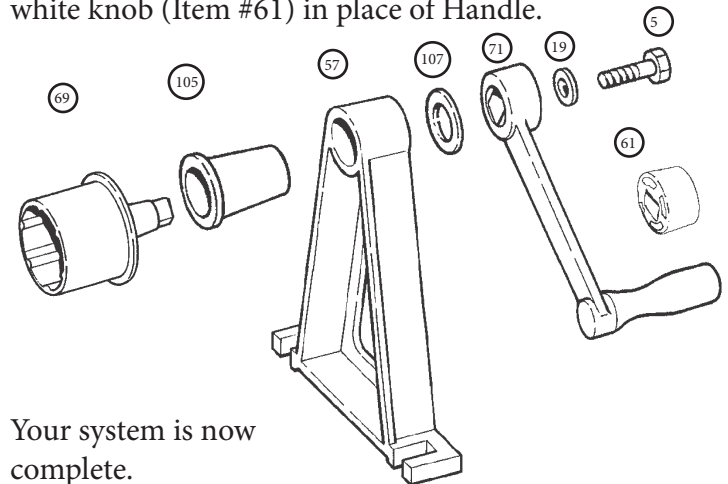
Using the two holes of the A-Frame (Item #57) as guides, make two marks on the deck for each A-Frame. With a 1/2" wood drill bit, drill a 1 1/2" deep vertical hole at each mark.

6 Assembling the System

Put the Black Bushing (Item #105) onto the end of the hub remembering to put some Vaseline or waterproof grease inside the Bushing (Grease once a year after first application). Push tube into the Black Bushing (Item #105) then into the A Frame (Item #57). Put the Black Washer (Item #107) over the protruding end of the Hub & slide the Handle (Item #71) onto the end of the Hub. Put the Washer (Item #19) on the Bolt (Item #5) and secure the Handle.

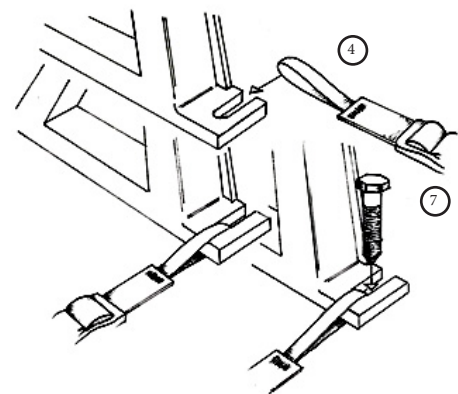
VERY IMPORTANT: Do not over tighten this bolt as it will make it hard to rotate handle.

Repeat this on the other end of the unit and use the white knob (Item #61) in place of Handle.



Your system is now complete.

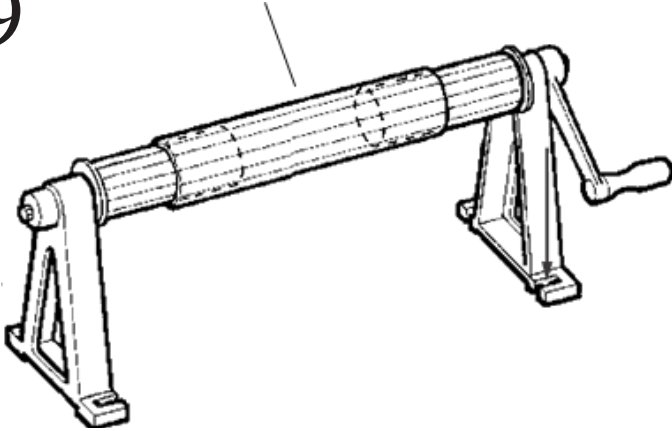
8



Insert the 1 1/2" lag bolts (Item #7) through the 3/8" washers (Item #21) and the holes on the A-Frames and into the wood dock. At one of the lag bolts on the A-Frame with the handle, take the shortened snap strap (Item #4) and put the sewn loop below one of the washers and run the bolt through it as well. Tighten the 3/8" bolts.

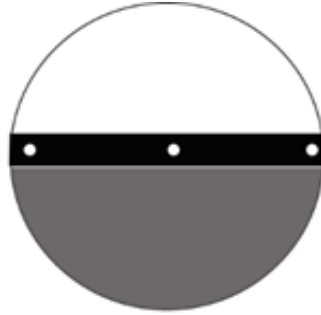
REEL EZ REEL INSTRUCTIONS

9



Locate the center of the tube system by measuring full distance of the tube then mark with marker.

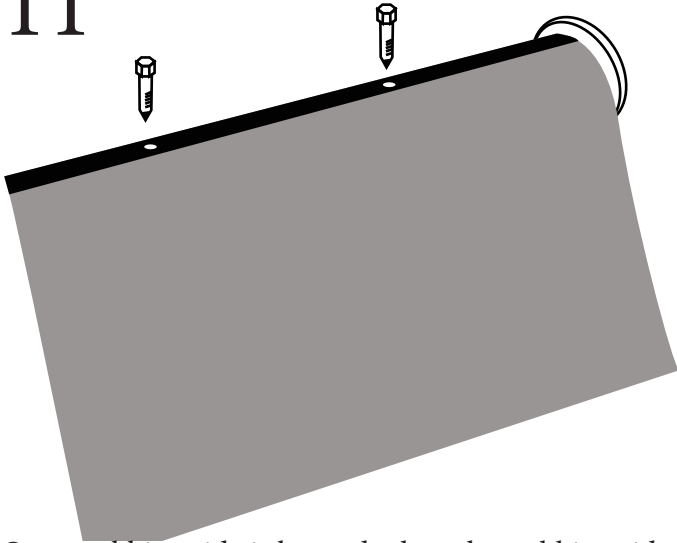
10



Locate end of cover with 3/4" black webbing that have pre-drilled holes

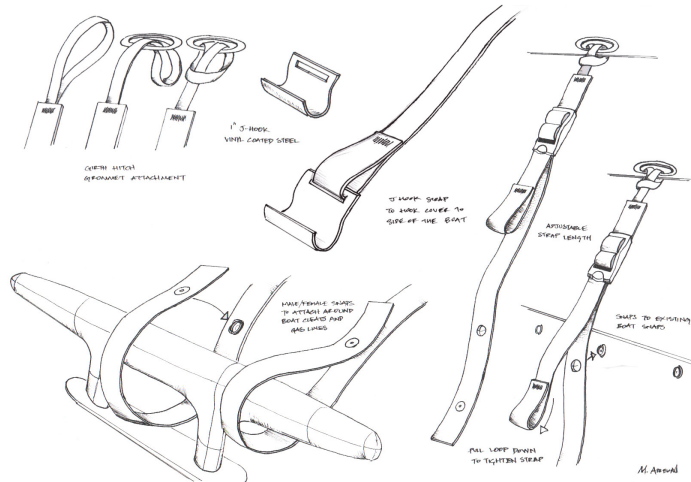


11



Once webbing side is located, place the webbing side of cover against the tube system, then find pre-drilled center hole on cover (webbing strip end) and match that hole with the center mark on the tube then set the screw (Item #501) and tighten through the material and into tube. Continue screwing self tapping screws through the pre-drilled holes on the cover and into the tubes, working your way to the outsides making sure to keep the fabric taut.

REEL EZ COVER INSTRUCTIONS



Three different ways to attach the “Snap Straps” on the cover to the Boat as illustrated above

1. Use the strap’s female snap to connect to the existing boat male snap
2. Make a loop by snapping the male to female snaps on the strap and loop around a cleat, rail or other fixed object on the boat
3. Make a loop by snapping the male to female snaps on the strap and loop through a coated “J” hook (ordered separately) and attach “J” hook to lower boat lip.

Operational / Instructions:

Unroll the cover from the reel through the center of the boat if one person or from each side if two persons. Find a place to secure at least two “Snap Straps” starting at the back of the boat (cleat, rail or male snap see illustration above)

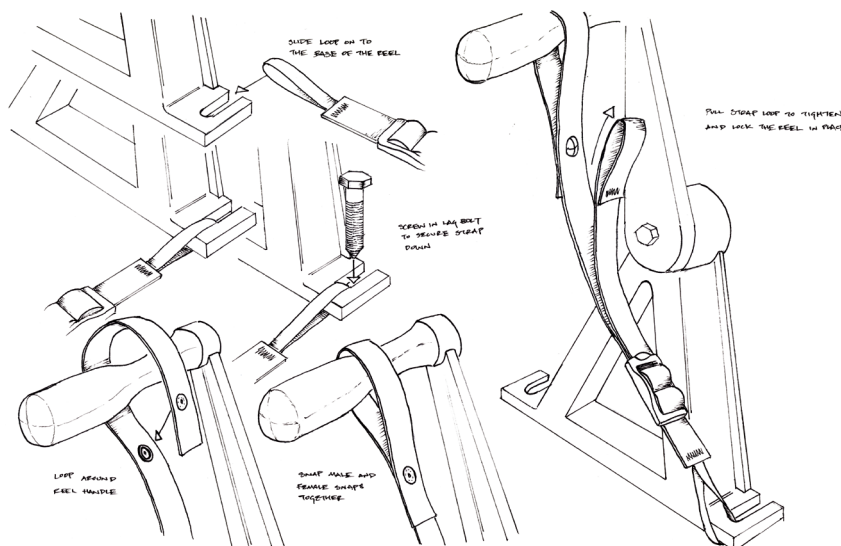
Work your way forward on each side of the boat securing the straps as you go (at least 3-4 per side). You may need to experiment with where best to attach the straps and how tight to adjust them the first couple of times.

Once you get it the way you want the subsequent times are easier.

You may want to lightly mark the attachment locations for future ease of use.

Once you have the cover attached to the sides and the back you should tighten the material at the Reel.

You can secure the position of the hand crank on the Reel and maintain the tension on the material using the shortend “Snap Strap” by forming a loop with the male and female snaps, placing that loop around the crank on the A-frame and adjusting the tension.



You need to leave some slack at the front if your boat is not lifted at the dock.

However, the tighter you can keep the cover on top the less chance of water pooling in some spots.

If water does pool at some spots you may want to purchase 1 or 2

Inexpensive universal adjustable cover poles to place strategically.

Use the cinch straps for wrapping around the cover when the cover is fully rolled on to the reel for storage.

REEL EZ COVER INSTRUCTIONS

Reel Package Components	Item #	Quantity	Description
	501	16	Self-tapping screws
	5	2	5/16" x 1" Bolt
	7	4	3/8" x 1.5" Lag Bolt
	19	2	5/16" Washer
	21	4	3/8" Washer
	57	2	A-Frame
	61	1	White Knob
	69	2	3" Regular Hub
	71	1	Small Handle (Crank)
	105	2	Plastic Bushing
	107	2	Plastic Washer
Tube Package Components	37	4	1/4" Lock Nut
	27	4	1/4"x3 3/4" Carriage Bolt
	357	2	45.5" Small Diameter Tubes
	359	1	91" Tube
Cover Package Components			
	1	1	Cover
	2	12	Snap Straps
	3	2	Cinch Straps (for storing fabric)
	4	1	Small Snap Strap (for locking handle)

Tools	Needed
	Reversible Electric Drill
	5/16" Hex Head Socket Bit
	1/2" Wrench
	5/8" Wrench
	7/16" Wrench
	1/4" Drill Bit
	Hammer